

**Watershed Protection and  
Development Review  
Department**



# **North Lamar/Georgian Acres Neighborhood Planning Area: Watershed Concerns**



**Nov. 18, 2008**



**Little Walnut Creek**



**Little Walnut Creek**



**Little Walnut Creek**



**Brownie Playground**

# WARNING

This park is within a  
Storm Water Management  
facility and should be  
evacuated

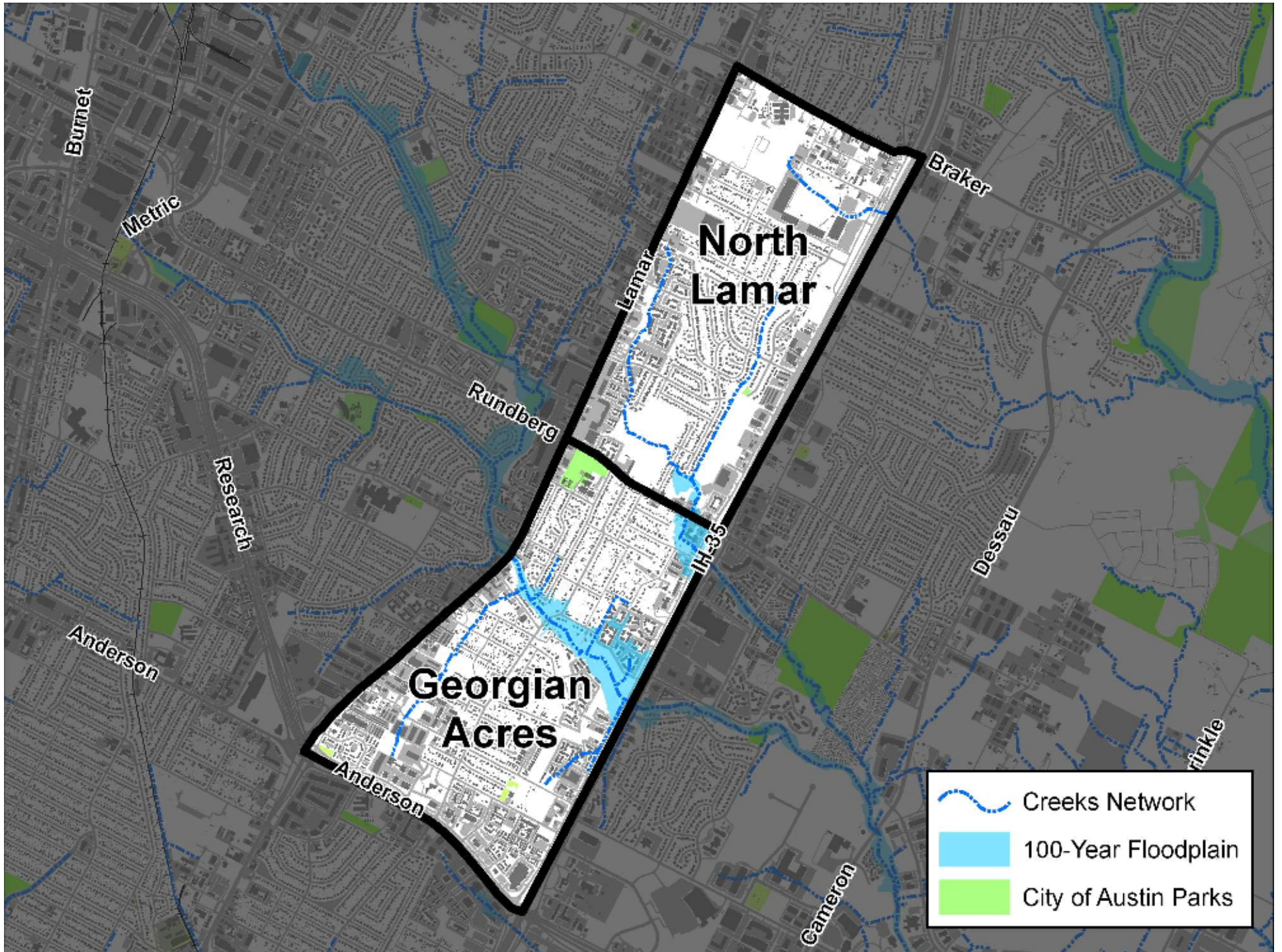
# PELIGRO

Este parque esta  
dentro de una facilidad  
de Storm Water Management  
y debe evacuar en  
acontecimientos de tormenta.

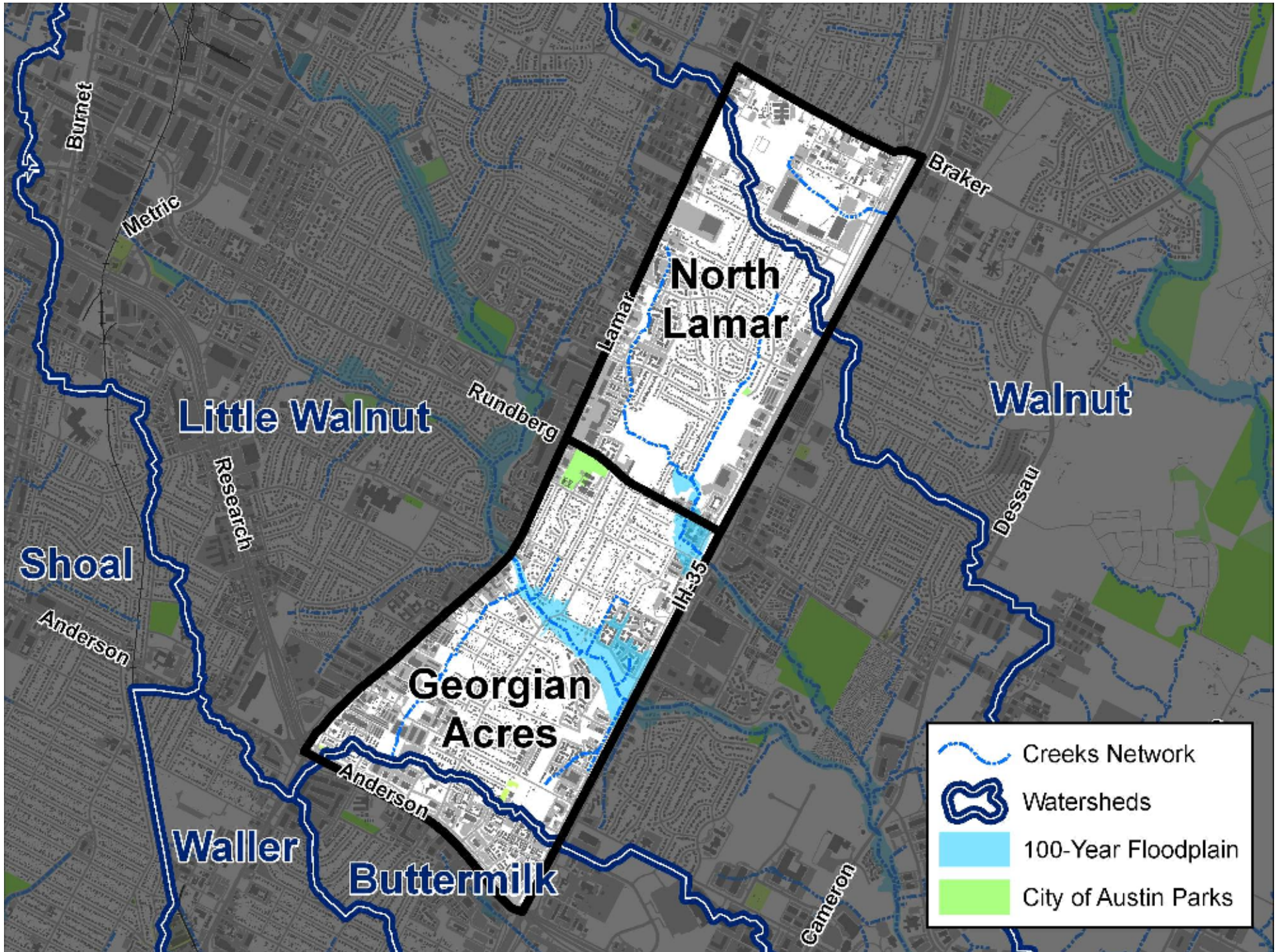
**Brownie Playground**



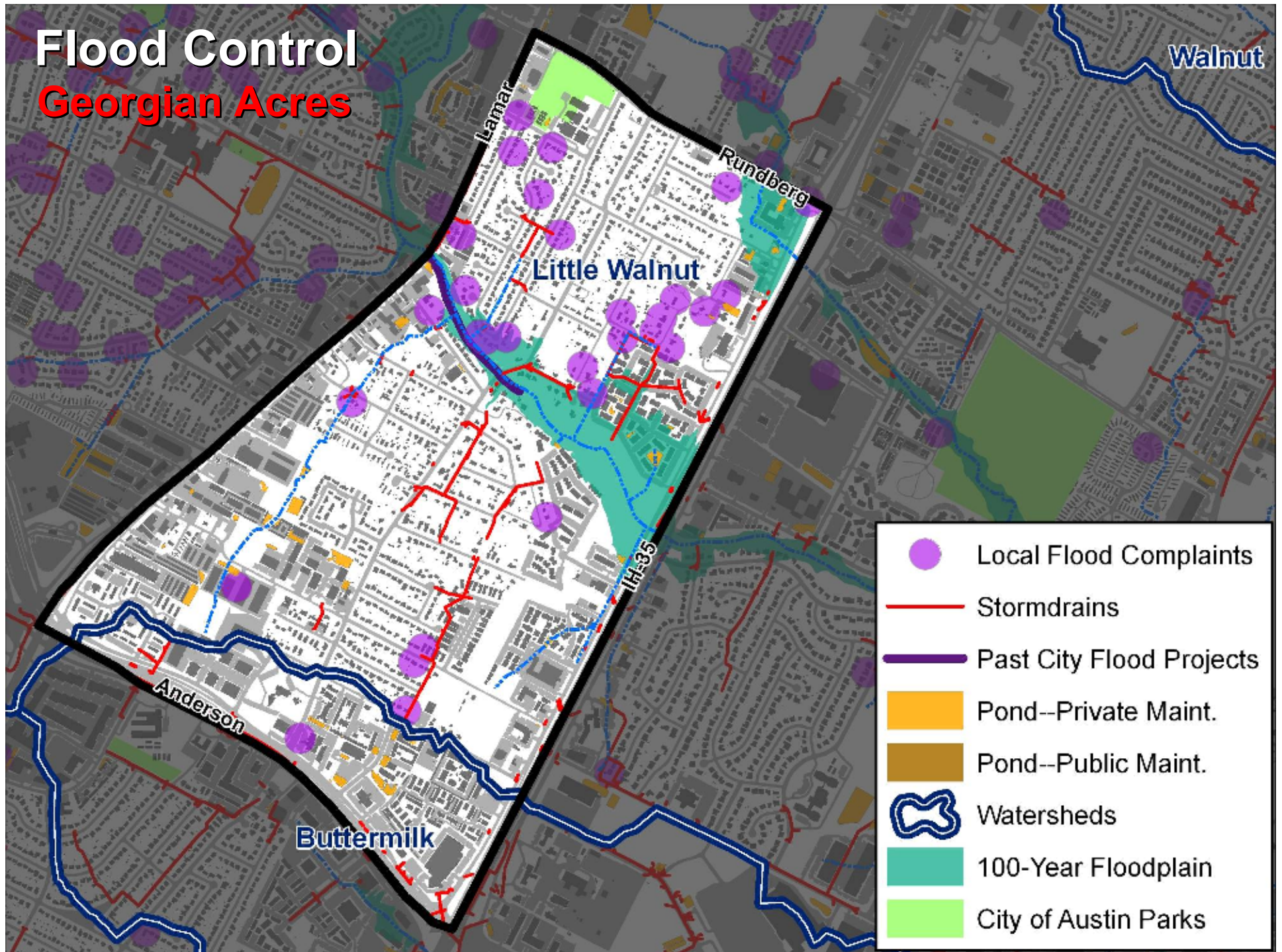
**Applegate Drive**



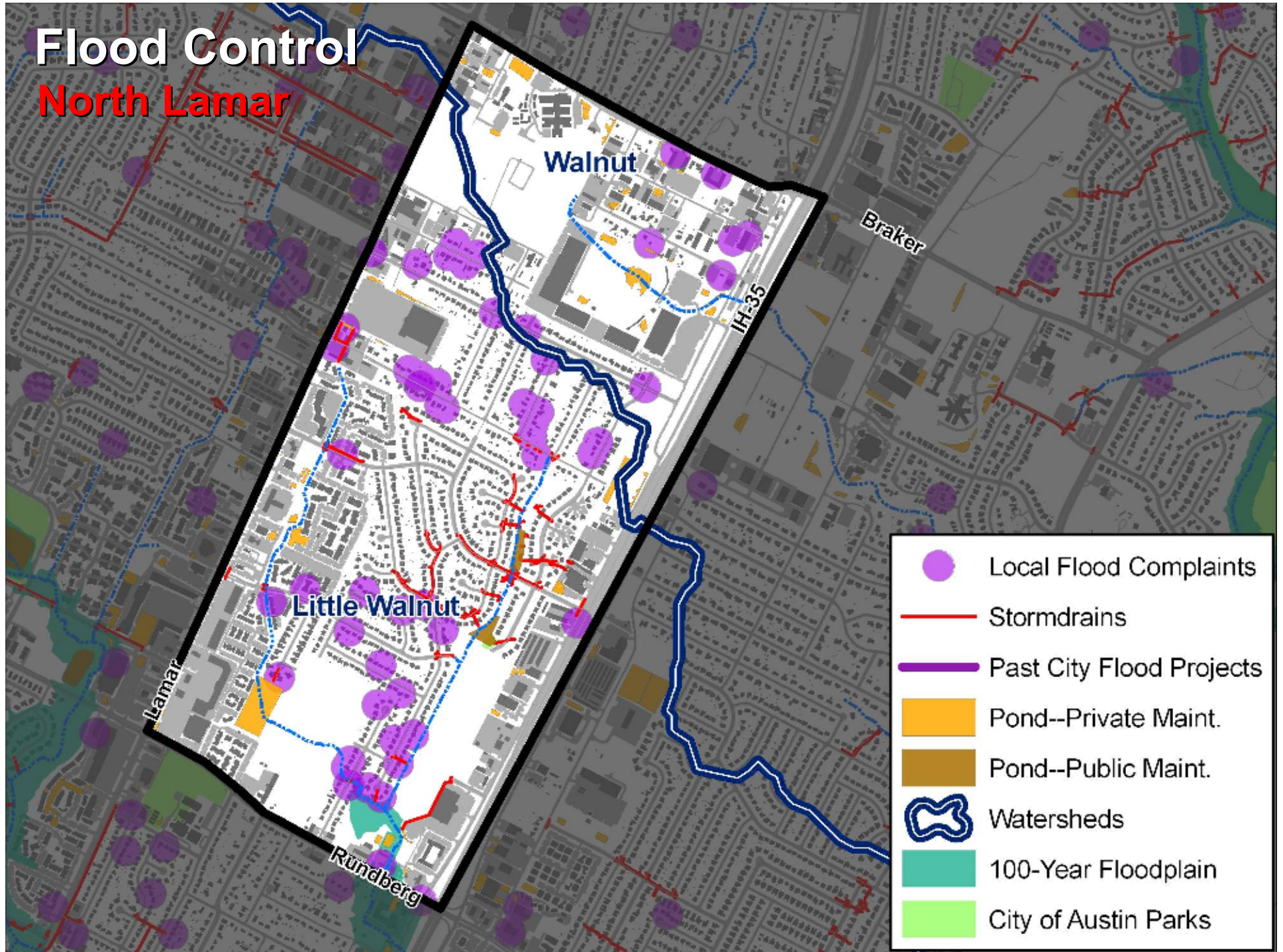




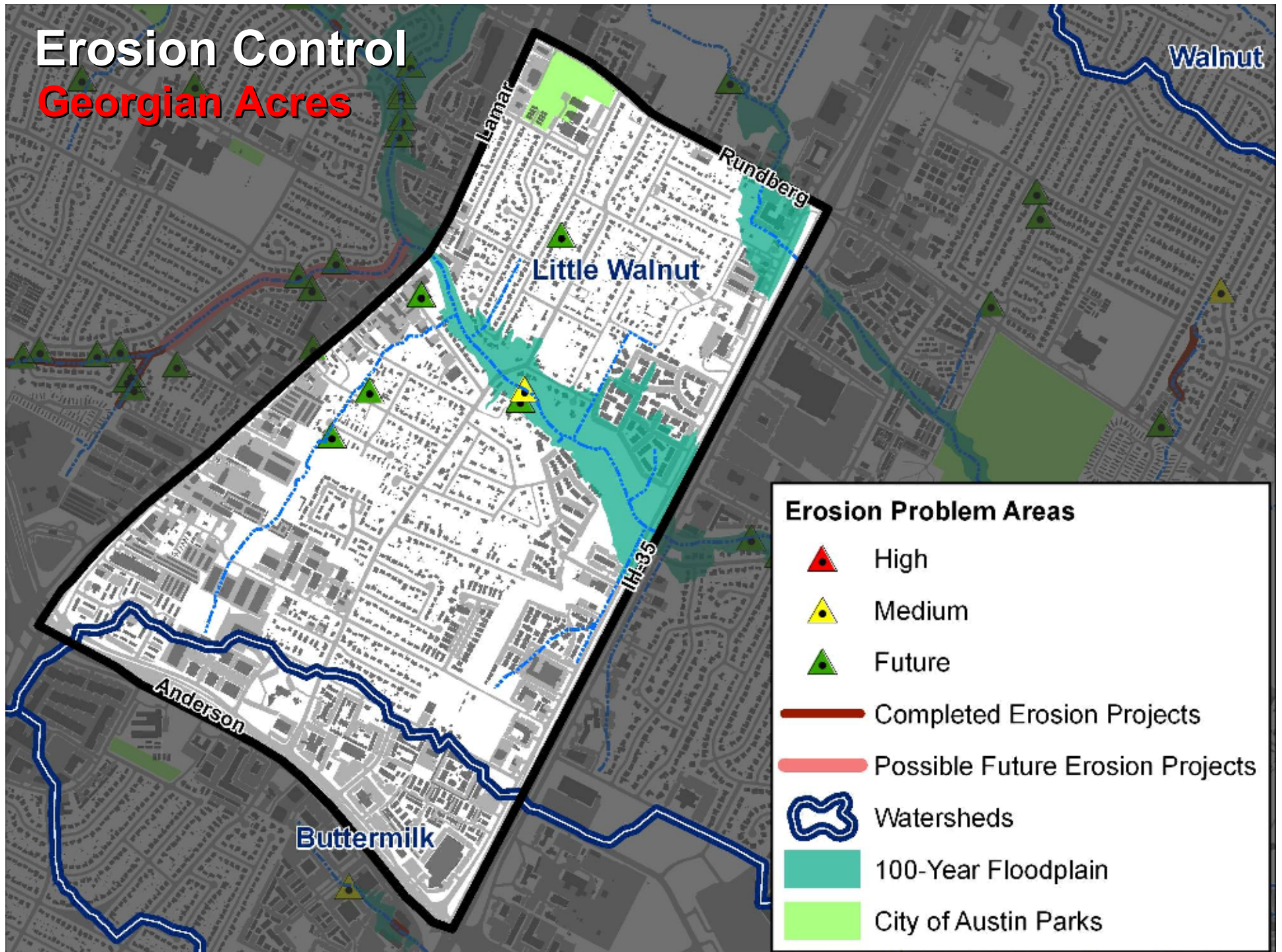
# Flood Control Georgian Acres



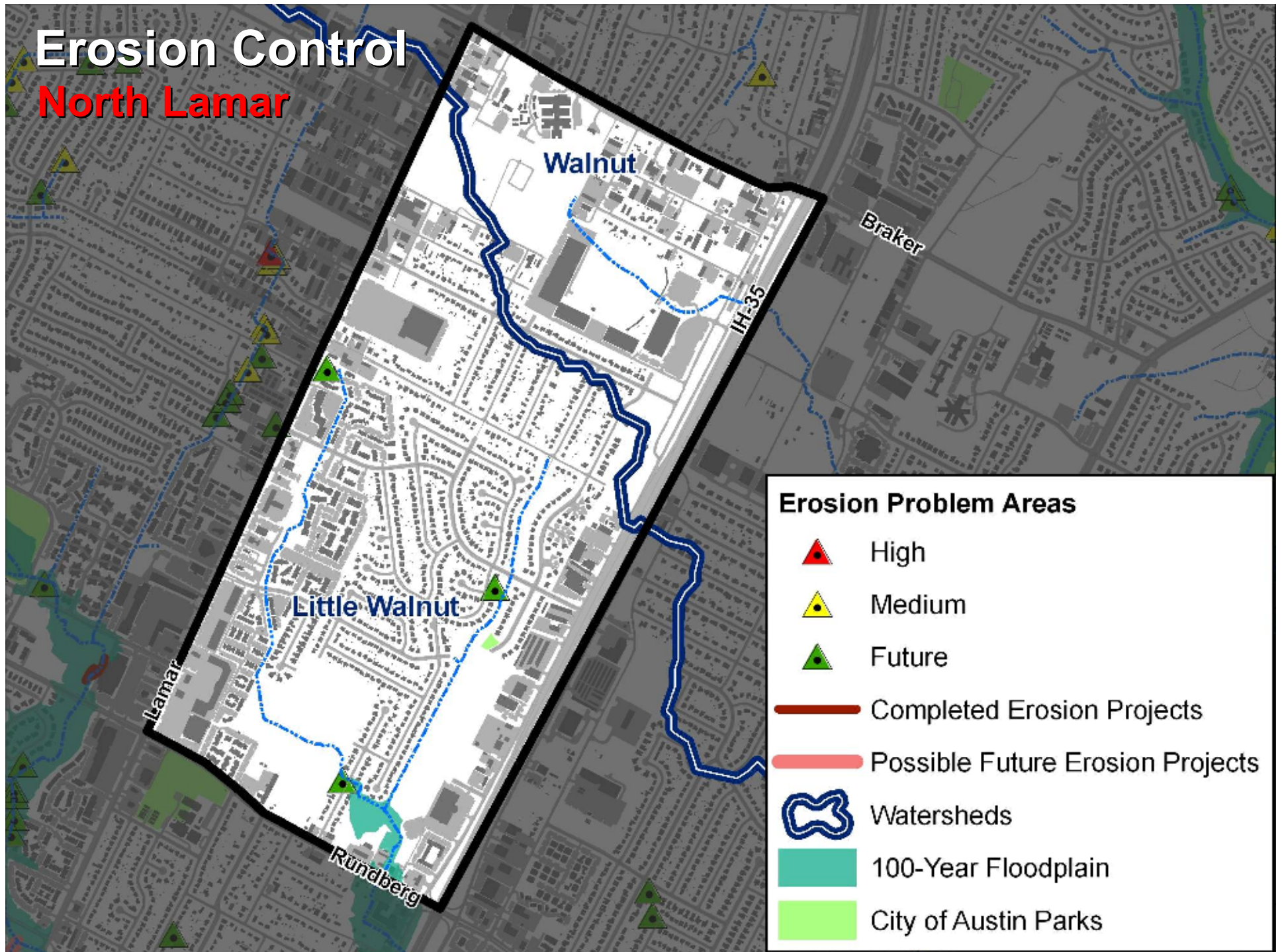
# Flood Control North Lamar



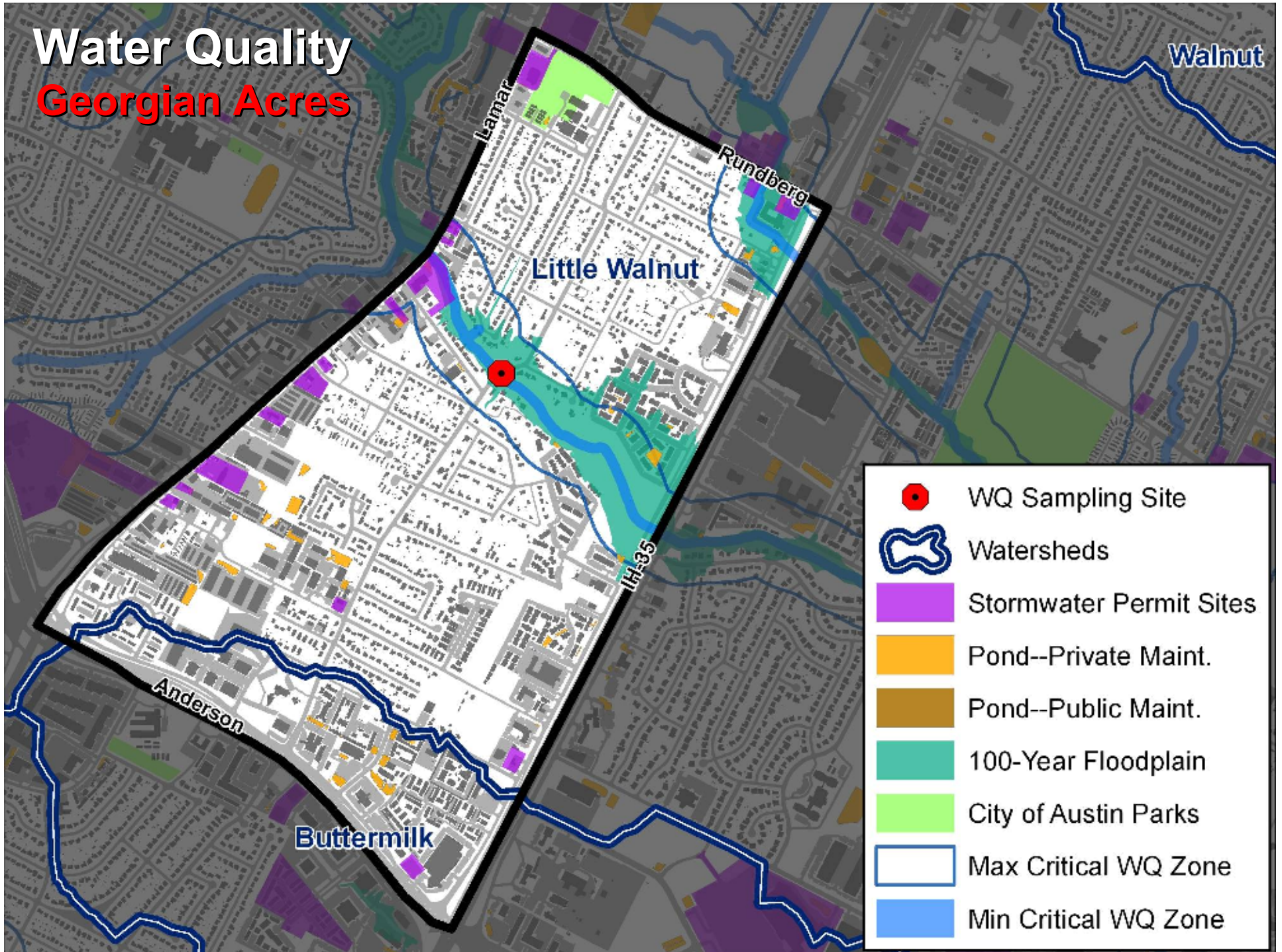
# Erosion Control Georgian Acres



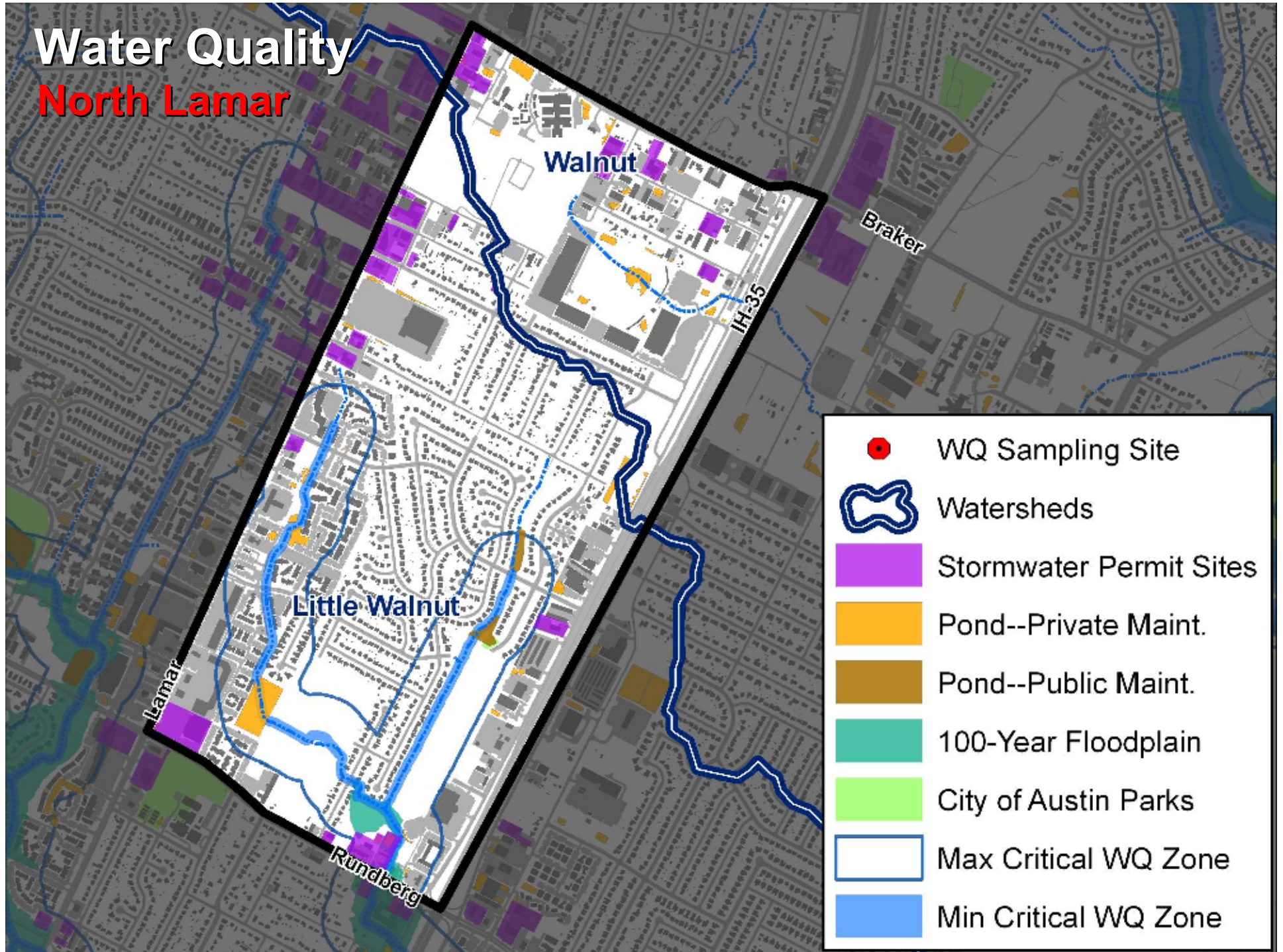
# Erosion Control North Lamar



# Water Quality Georgian Acres

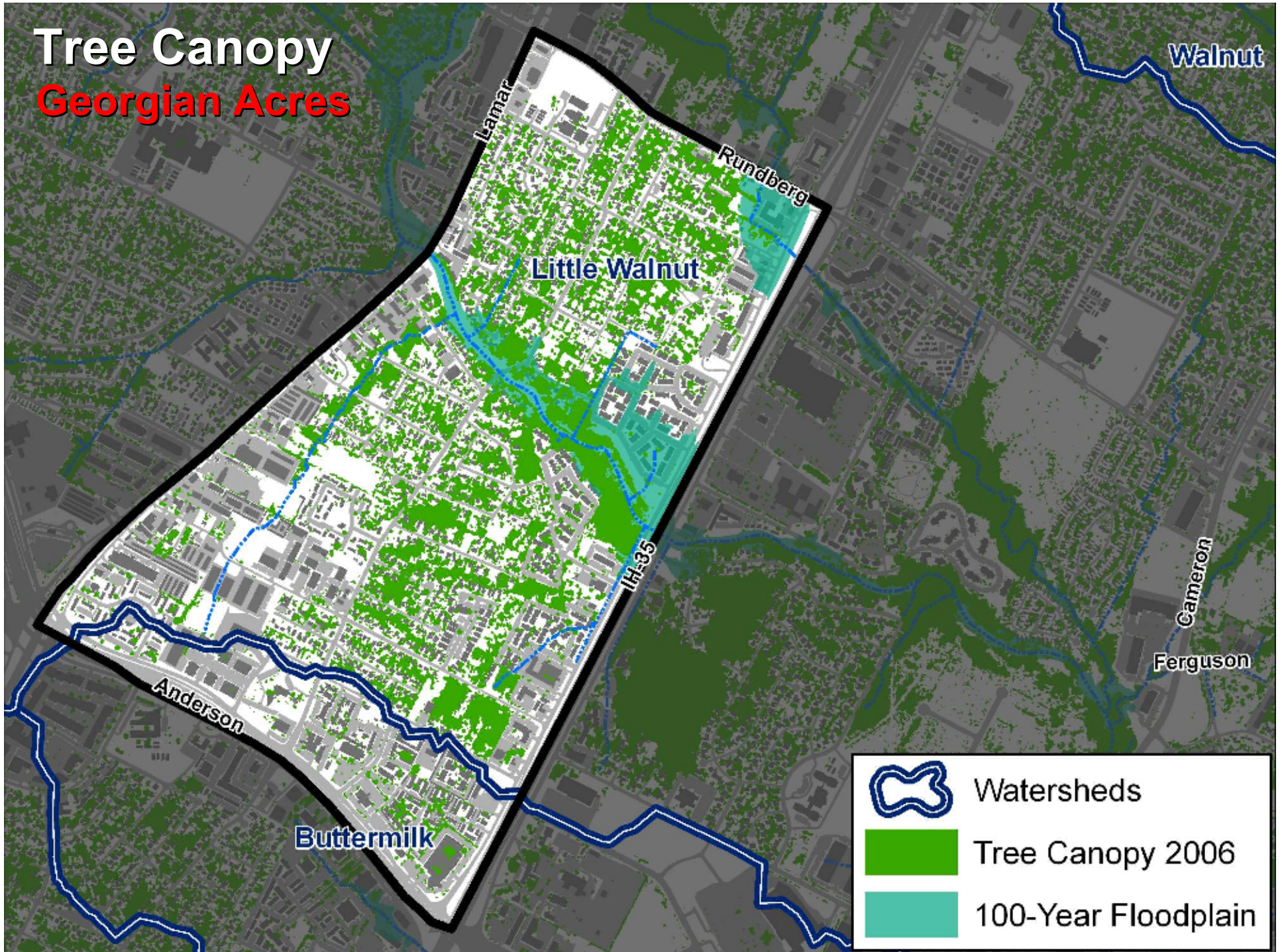


# Water Quality North Lamar



# Tree Canopy

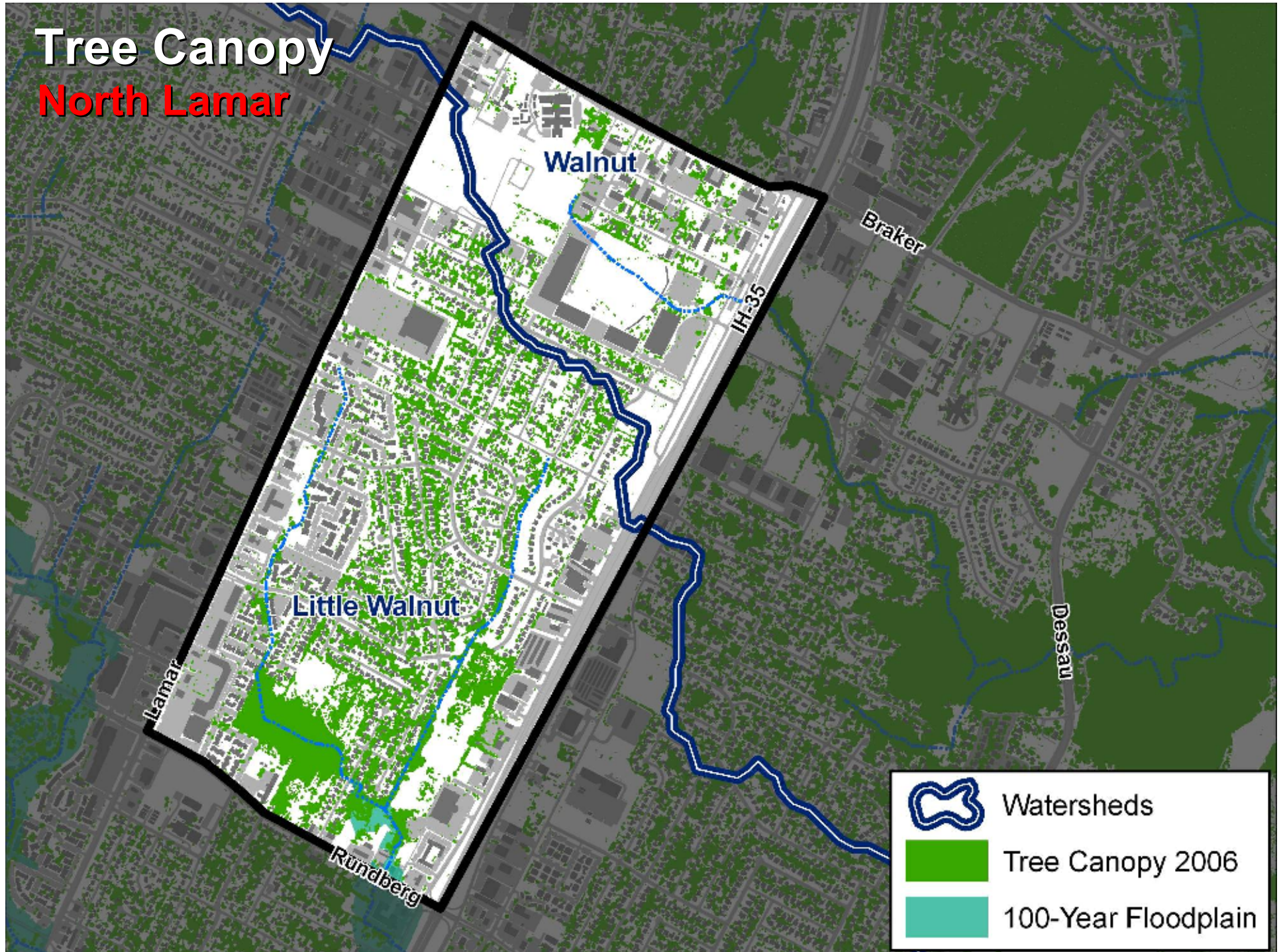
## Georgian Acres





# Tree Canopy

## North Lamar



# Little Walnut EII Scores

Subindicator	Numeric	Narrative	% Ranking (worse than)
Water Chemistry	63	Fair	37
Sediment	80	Very Good	18
Contact Rec	55	Fair	46
Non-Contact Rec	72	Good	55
Habitat	53	Fair	67
Aquatic Life	83	Very Good	20
Overall Site EII	68	Good	36

# Little Walnut Problem Scores

<b>Problem</b>	<b>Narrative Priority</b>	<b>Ranking (% worse than)</b>
Channel stability	Low	49
Riparian vegetation	High	85
Bacteria from animals	High	73
Bacteria from sewage	Low	33
Litter	Low	53
Fertilizer	Low	20
Construction runoff	Low	40
Toxins in sediment	Low	39

# Buttermilk EII Scores

Subindicator	Numeric	Narrative	% Ranking (worse than)
Water Chemistry	37	Poor	91
Sediment	70	Good	35
Contact Rec	25	Bad	93
Non-Contact Rec	71	Good	58
Habitat	53	Fair	67
Aquatic Life	36	Poor	81
Overall Site EII	49	Marginal	84

# Buttermilk Problem Scores

<b>Problem</b>	<b>Narrative Priority</b>	<b>Ranking (% worse than)</b>
Channel stability	Very High	100
Riparian vegetation	High	84
Bacteria from animals	Medium	62
Bacteria from sewage	Very High	100
Litter	High	84
Fertilizer	Low	31
Construction runoff	Very Low	0
Toxins in sediment	High	76

# Pollution Prevention and Reduction

- Spill and Pollution Complaint Response
- Stormwater Discharge Inspections
- Targeted Outreach Programs: Clean Water Partners, Shade Tree Mechanic, Food Service Assessments



A photograph of a forest scene. In the foreground, there are several trees with green leaves, some of which are slightly out of focus. The background is filled with a dense stand of bare, brown trees, suggesting a late autumn or winter setting. The overall lighting is somewhat dim, and the sky is a pale, overcast grey. The word "Questions?" is written in a bold, yellow, sans-serif font with a black outline, centered in the middle of the image.

**Questions?**

# Urban Watershed Problems

- Sins of the past: creek encroachment, lack of hydrologic controls, high connected IC
- Eroded creek banks with threatened structures, poor riparian zone width & quality
- Low baseflow
- Wastewater lines in creeks
- Aging, overwhelmed storm drain system
- Pollution hotspots (businesses, dumping)
- Trash in creeks, to Town Lake
- Sporadic, fragmented greenbelt system



## **Urban Watershed Focus:**

**HOLD THE LINE  
BALANCE OTHER PRIORITIES  
LONG-TERM REPAIR**

# Urban Solutions

1. Embrace urbanity; density here to stay:
  - Damage is done; the market & our own regs won't scale it back; impact per capita, not per acre
  - Creative WQ BMPs (compact, use landscaping): seek positive solutions (teach, partner, demonstrate)
2. Repair creeks:
  - Stream channel stabilization; targeted property buyouts
3. Community vision & connection with creeks:
  - Direct projects & neighborhood outreach
  - Trash cleanups, prevention (with KAB, neighborhoods, businesses)
  - Protect parkland & trails (with PARD)
  - Tree plantings (with AE, PARD, neighborhoods)
4. Continue key programs (SDPP, Spills, ACWP)
5. Partner for long-term, incremental watershed repairs
  - Rain gardens, rainwater harvesting, porous pavement, wet ponds
  - N'hoods, businesses, schools, public buildings & projects
  - Redev't; Public Works (roads & bridges); PARD; AWU; AE; KAB