

**NORTH LAMAR  
COMBINED  
NEIGHBORHOOD  
PLANNING AREA**

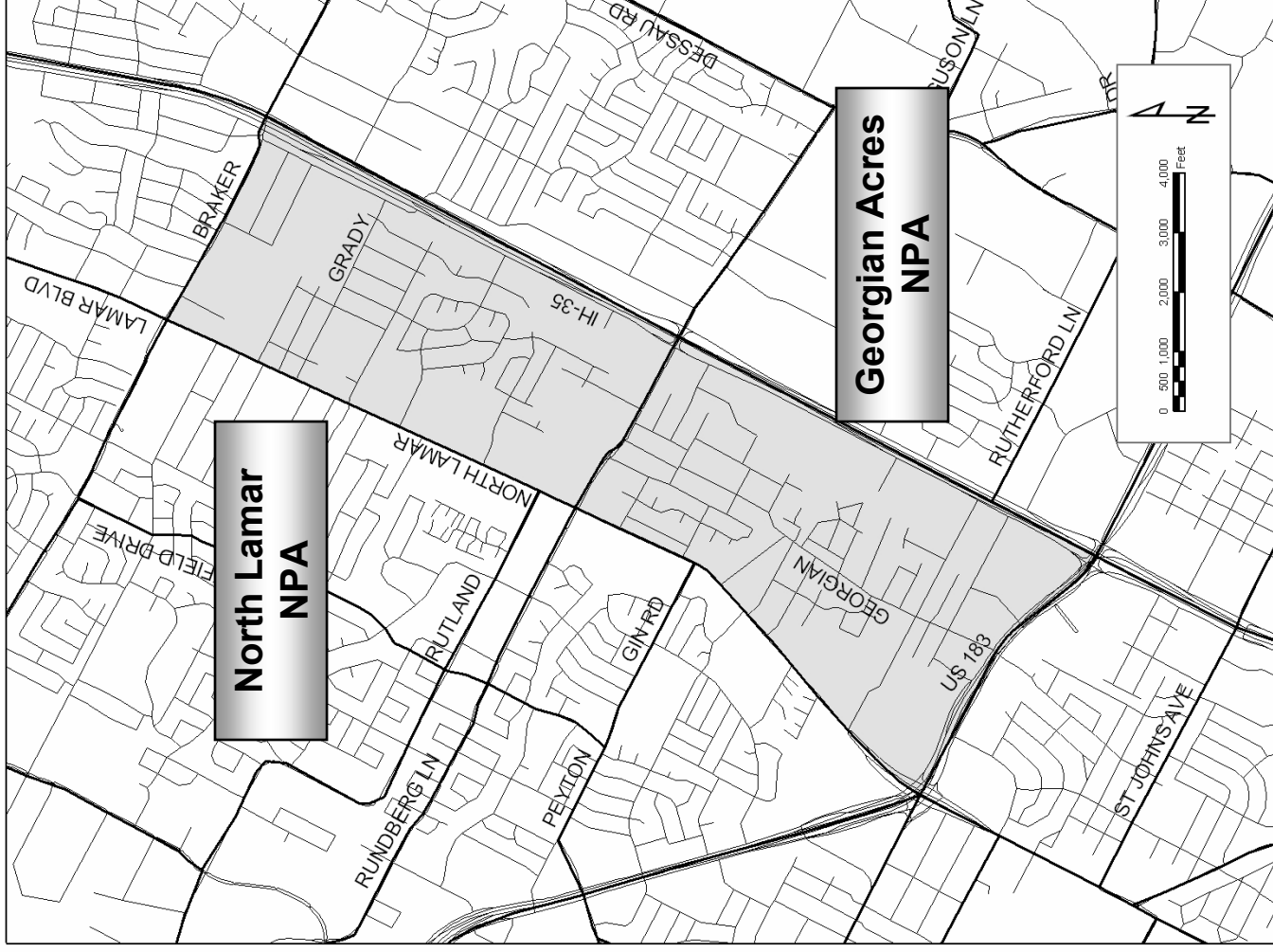
**KICK-OFF MEETING**

**November 15, 2007**

# The North Lamar Combined Neighborhood Planning Area

Two planning areas—

- Georgian Acres
- North Lamar



**North Lamar Combined NPA**

# **WHAT IS NEIGHBORHOOD PLANNING?**

## **North Lamar Combined NPA**

### **Neighborhood Planning . . .**

**. . . creates the opportunity  
for the community to take a  
proactive role in your  
neighborhood.**

**North Lamar Combined NPA**

## **Neighborhood Planning . . .**

**. . . is a 12 to 18 month  
process that provides  
stakeholders the opportunity  
to create a shared vision for  
your neighborhood**

## **North Lamar Combined NPA**

### **Neighborhood Planning . . .**

**. . . provides the framework  
for a diverse stakeholder  
group to voice what they  
want changed and what they  
want preserved .**

**North Lamar Combined NPA**

# **Who are the Stakeholders?**

**Business owners and employees**

**Renters**

**Home-owners**

**Institutions**

**Non-profit groups**

**Non-resident property owners**

**City of Austin**

**North Lamar Combined NPA**

# **HOW TO GET INVOLVED IN THE PROCESS**



## **North Lamar Combined NPA**

**Complete surveys**

**Attend workshops and small group meetings**

**Be an active participant at meetings**

**Be positive and solution-oriented**

**Encourage your neighbors to get involved**

**North Lamar Combined NPA**

# **WHAT IS CITY STAFF'S ROLE?**

## **North Lamar Combined NPA**

**Ensure a fair and collaborative  
planning process for all  
stakeholders**

**Conduct surveys**

**Organize and facilitate meetings**

**Update the current land use and  
sidewalk maps**

## **North Lamar Combined NPA**

**Present the plan to boards, commissions and City Council**

**Throughout the planning process, coordinate with other City departments in response to plan recommendations and neighborhood questions and issues**

**Provide technical assistance and education on planning issues**

**North Lamar Combined NPA**

# **Information & Education**

## **North Lamar Combined NPA**



**Provide education on zoning and land use planning concepts and principles**

**Provide education on transportation planning concepts**

**Provide information about how other City of Austin departments and programs work through representatives attending meetings**

**North Lamar Combined NPA**

# **WHAT DOES A NEIGHBORHOOD PLAN DO?**

**North Lamar Combined NPA**

**First and Foremost, a  
Neighborhood Plan . . .**

**. . . Creates a consensus  
vision for how the  
neighborhood will move  
into the future.**



## **North Lamar Combined NPA**

# **A Neighborhood Plan . . .**

**Creates a framework for zoning and land use decisions**

**Updates zoning and land use maps to reflect current development and direct future growth.**

**North Lamar Combined NPA**

## **A Neighborhood Plan . . .**

**Gives direction to the City of Austin  
regarding future capital  
improvement projects**

**Increases housing choices for  
Austin's current and future residents**

**North Lamar Combined NPA**

## **A Neighborhood Plan . . .**

**Addresses local and city-wide transportation issues**

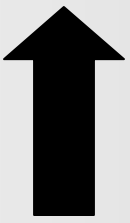
**Maintains the City's tax base to support such things as schools, libraries, and infrastructure improvements**

**North Lamar Combined NPA**

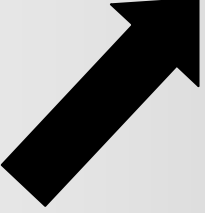
**Neighborhood Planning . . .**

**. . . Is a Process**

Background  
Research



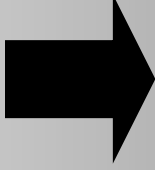
Survey



Kick-Off  
Meeting  
*Today*



First  
Workshop  
*Dec. 6*



Task Group Meetings

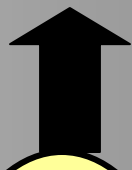
Land Use  
& Urban  
Design



Zoning



Transportation



Mid-Process Meeting

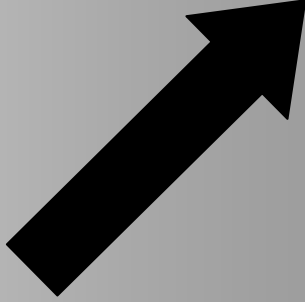
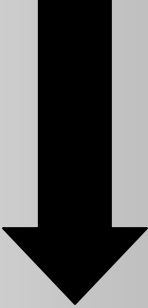
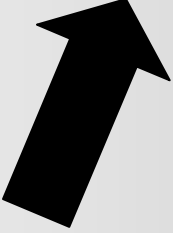
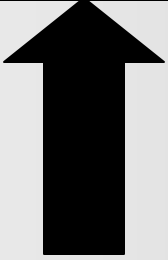
Refine Plan Based on Input

Final Open House

Boards and Commissions

Refine Plan Based on Input

City Council



**North Lamar Combined NPA**

**Although a Neighborhood  
Plan Does NOT  
Directly Address. . .**

**Traffic Calming**

**Maintenance or Operational Issues**

**Code Enforcement**

**Enforce Laws**

**Residential Parking Program**

**North Lamar Combined NPA**

**. . . through the planning  
process we will  
communicate these types  
of concerns to the  
appropriate  
City of Austin Departments  
and other agencies**



**A Neighborhood Plan Cannot  
Make Recommendations  
Inconsistent with  
Established  
City of Austin Policies, or  
in Violation of State  
or Federal Law**

## **North Lamar Combined NPA**

# **Elements of a Neighborhood Plan**

- **Transportation**
- **Urban Design &  
Neighborhood Character**
- **Parks and Open Space**
- **Land Use and Zoning**
- **Special Topics as Needed**

# **North Lamar Combined NPA**

## **Transportation**

**Making it easier to get around the neighborhood safely for...**

**Pedestrians**



# **North Lamar Combined NPA**

## **Transportation**

**Making it easier to get around the neighborhood safely for...**

**Pedestrians**

**Cyclists**



# North Lamar Combined NPA

## Transportation

Making it easier to get around the neighborhood safely for...

Pedestrians

Cyclists

Transit users



# North Lamar Combined NPA

## Transportation

Making it easier to get around the neighborhood safely for...

**Pedestrians**

**Cyclists**

**Transit users**

**Motorists**





# Urban Design/Neighborhood Character



**The look and feel of the neighborhood**

# **North Lamar Combined NPA Parks and Open Space**



**Preserving open  
space**

**Recommendations for  
improvements to  
existing parks and . . .**



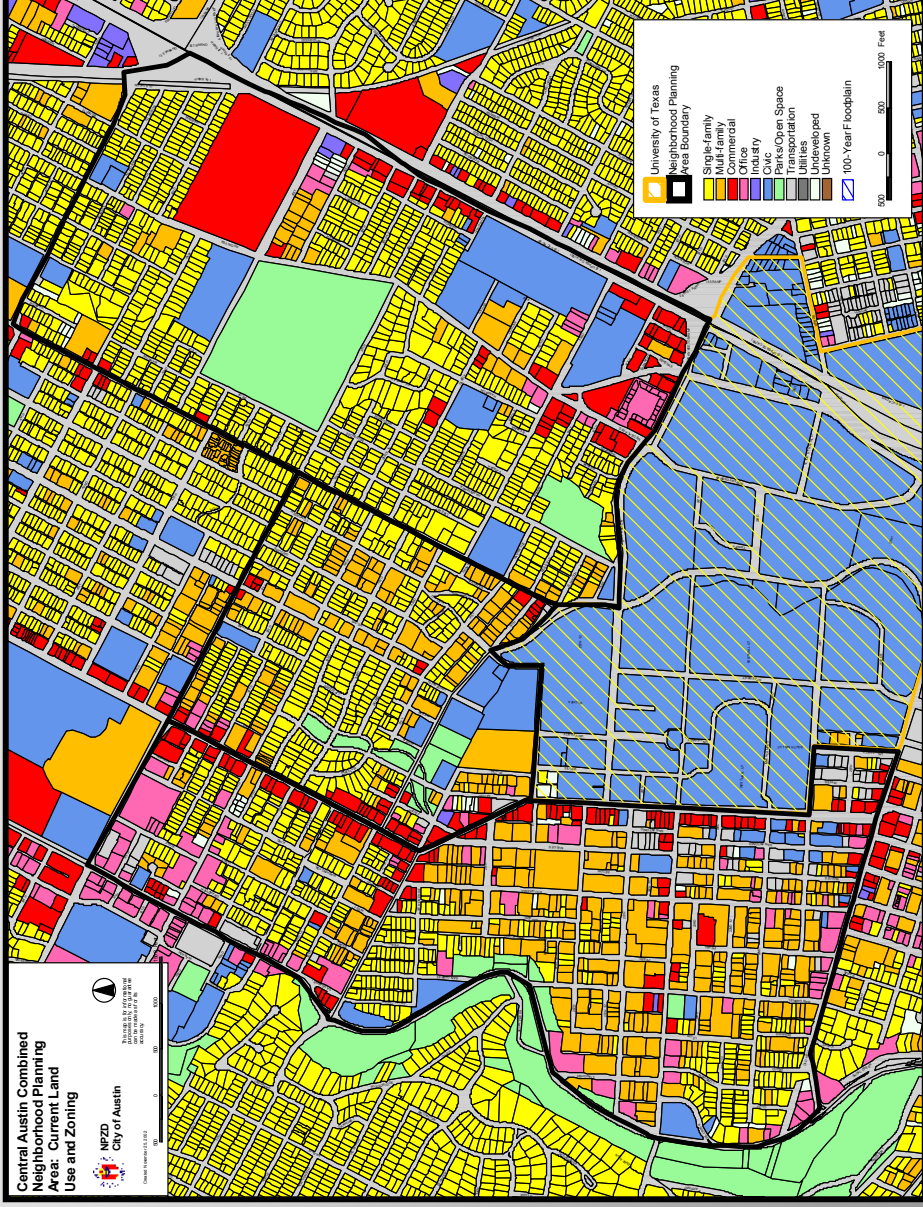


# North Lamar Combined NPA Land Use and Zoning

Address land  
uses that may  
not match their  
zoning

Remedy  
patterns of  
incompatible  
land uses

Provide a wider  
variety of  
developments  
opportunities



# **North Lamar Combined NPA Special Topics That Can Be Addressed**

**Creating a vision and a plan for North  
Lamar Boulevard**

**Crime and Public Safety**

**Other topics revealed during the  
planning process**

**North Lamar Combined NPA**

# **THE RESULTS OF THE PROCESS**

## **North Lamar Combined NPA**

**A Neighborhood Plan document with a vision, goals and recommendations**

**Strategies to implement the plan**

**A future land use map (FLUM) to guide future land development**

**Recommendations for capital improvements**

## **North Lamar Combined NPA**

**Two zoning ordinances—one for each planning area—to implement the land use plan and may include:**

- ❖ Base zoning changes**
- ❖ Conditional Overlays**
- ❖ Infill and Design Options**

**North Lamar Combined NPA**

**WHAT'S NEXT IN THE  
PLANNING PROCESS?**

## **North Lamar Combined NPA**

**December 6 – 1st Workshop**

**Vision & Goals—tentatively  
scheduled for week of Jan 7-11**

**Parks & Open Space—tentatively  
scheduled for week of Jan 28-Feb 1**

**Times and Places to Be Determined**

**North Lamar Combined NPA**

**Questions about the  
process?**



**North Lamar Combined NPA**

**WHAT'S NEXT FOR  
TONIGHT'S MEETING?**

## **North Lamar Combined NPA**

### **Brainstorming Exercise**

**Break into small groups and consider the following questions:**

***What are the three most important issues in your community?***

***What are your expectations of the neighborhood planning process?***